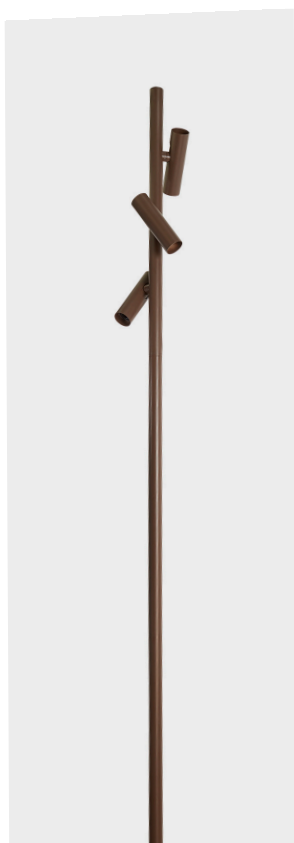


LADY

Urban Pole Lighting



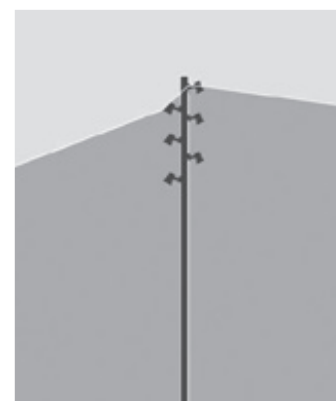
LADY is a multi purpose urban lighting column suitable for squares, roads, pedestrian precincts, car parks and sports grounds. Advanced thermal design with cutting-edge manufacturing process and materials. The system offers rotationally symmetrical light distribution narrow to wide beam.

Designed to last in extremely harsh environments.

Power unit is built in. Available in anthracite gray as a standard finish or any desired RAL colour. Adjustable mounting projectors made of aluminium injection Die-Cast with polyester powder coating. Poles are in galvanized steel or aluminium, available in different heights from 4m to 10m.

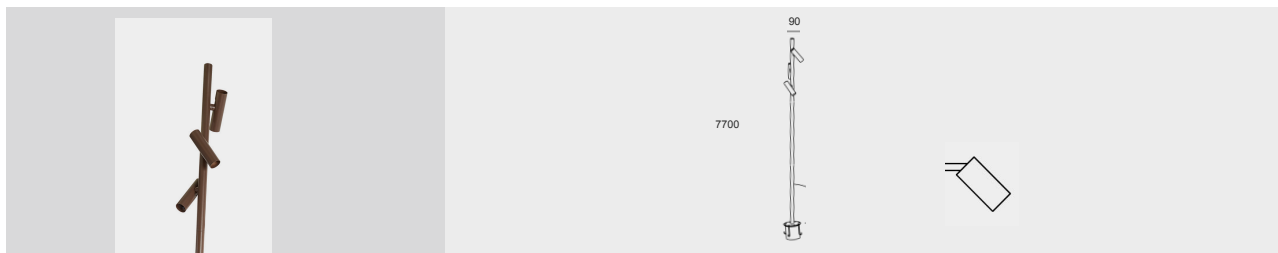
Characteristics

- Aluminium Head
- Aluminium Pole or Hot Dip Galvanized Pole
- Electrostatic Powder Paint
- Adjustable Bracket
- High Power LED with Life Span 60.000 Hours
- ENEC Certified Driver
- 3 Step MacAdams



LADY

Urban Pole Lighting



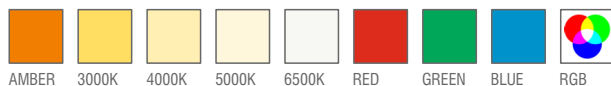
Standard Product

Input	210-260V / AC 50-65Hz
Control	On / Off
Optic	45°
Light Color	3000K
Body Color	Brown
CRI	>80
Protection	IP66
Impact Resistance	IK09

Available Options

Input	24V / DC
Control	RGB, DALI, DIM, DMX
Optic	50°, 70°
Light Color	3000K, 5000K, 6500K
Body Color	Optional RAL colors
CRI	>90

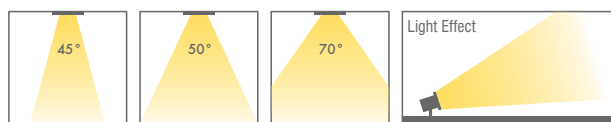
Light Colors



Ordering Details

Product Code	Power	Light Color	Number of Heads	Lumen
LADY.31.4Head.N.3.45	31W	3000K	4 Heads	4x3600LM

Beam Angle Options

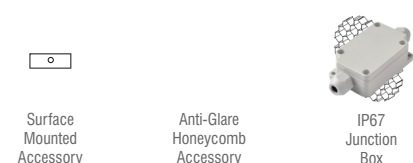


* For different options, please contact our team.

Body Colors Options



Optional Accessories



Product Coding

Product Name	Product Power	Input	Control System	Color Temperature	Light Beam	Body Color
XX	XX	AC DC	on/off 1-3DV PUSH TRAC	3K 4K 6.5K	XX	XX
XX	XX	AC DC	N V P T D	3 4 6	XX	XX