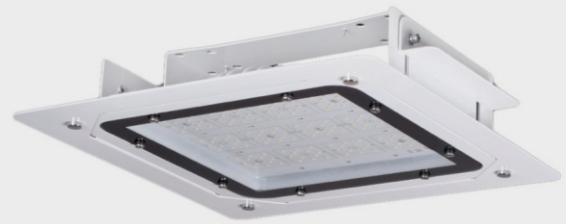


ARNE CANOPY

LED CANOPY type
Recessed LED lighting fixture



Our canopy ARNE provides the best outdoor lighting for gas stations, parking garages, loading areas, and drive-throughs. Petrol stations are transformed into branded landmarks and welcome environments with our comprehensive lighting solutions, inviting drivers to rest, relax, and recharge.

Our canopy lighting systems provide high vertical lighting levels, boosting client safety and comfort and, as a result, increasing brand loyalty. When compared to traditional lighting, switching to LED canopy lighting can save up to 90% of energy. Add sophisticated energy management technologies that allow for light level optimization and maintenance planning to boost savings even more. And you can be confident that our Petrol Station Lighting program is backed by cutting-edge lighting design experience, as well as international and/or local application.

Characteristics

- Aluminium Injection Body
- Electrostatic Powder Paint
- Optional RAL Colors
- Heat & Impact Resistant Extra Clear 5mm Tempered Glass
- Aluminium PCB
- LED with Life Span > 60.000 Hours
- CCT tolerance within a 3 step MacAdams ellipse
- Corrosion Protection (Optional)
- 5 Years Warranty
- Marine Coating (Optional)

Key Advantages

- High operational temperature
- Can be easily integrated to many designs
- Economic and efficient
- Easy installation
- High performance LED
- High corrosion resistance
- High lumen output
- Adjustable brackets

Applications



Landscape



Architectural

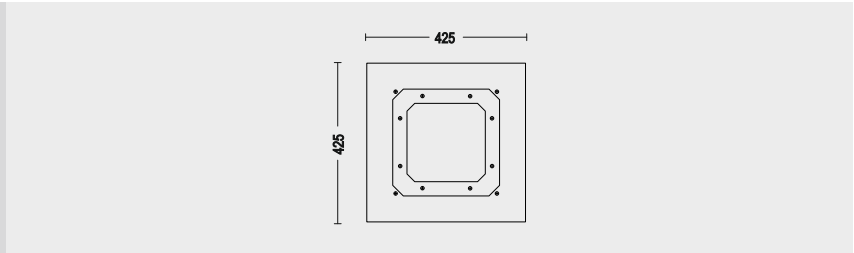


Ancient



Bridges

ARNE CANOPY



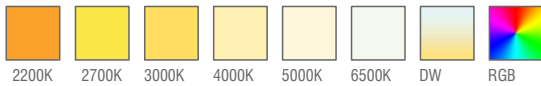
Standard Product

Input	100-305V / AC 50-60Hz
Control	On / Off
Optic	60°
Light Color	4000K
Body Color	7016 Grey
CRI	>80
Protection	IP66
Impact Resistance	IK09
Protection class IEC	Class I
Power factor (min.)	0,092
Surge protection	6KV
Wind Catching Area	0,08m ²
Weight	3kg
Ambient Temperature	-25°C / +60°C

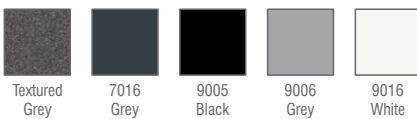
Available Options

Input	24V / DC
Control	DALI, DIM, DMX
Optic	8°, 15°, 30°, 60°, 90°, 120°, Asymmetrical
Light Color	2200K, 2700K, 3000K, 5000K, 6500K
Body Color	Optional RAL colors
CRI	>90
Surge protection	10KV
Protection	IP67-IP68
Warranty	7-10 Years

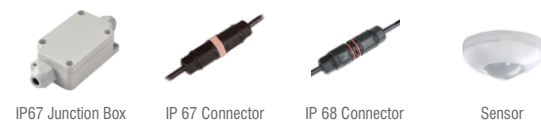
Light Colors



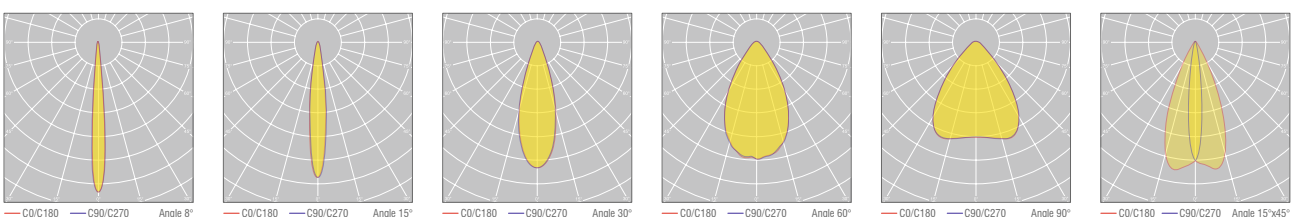
Body Colors Options



Optional Accessories



Beam Angle Options



Ordering Details

Product Code	Power	Light Color	Lumen
ARNEC.90.AC.N.3.60	90W	3000K	14371
ARNEC.90.AC.N.4.60	90W	4000K	14400
ARNEC.90.AC.N.6.60	90W	6500K	14429

* For different options, please contact our team.

Product Coding

Product Name	Product Power	Input	Control System	Color Temperature	Light Beam	Body Color
XX	XX	AC DC on/off 1-10V	PUSH TRIAC DALI	3K 4K 6.5K	XX	XX
XX	XX	AC DC	N V P T D	3 4 6	XX	XX