



PMMM Extrusion Body
SMD LED
Constant current LED driver
Production in different lengths
Optional body colors
ENEC standards



BASIC OPTIONS

on/off	on/off Control (No Dimmable)
230V AC	Input Voltage 220-240V/AC, 50-60HZ
CRI > 80	Color Rendering Index > 80
4K	Light Temperature 4000K
	Light Beam 120°
	Operating Temperature : -20 / 40 °C
w	White Body Color

PRODUCT CODE	W	Length	Temp	Lumen*
HORIZONTALI.9.300.N.4	9	300	4000K	850
HORIZONTALI.18.600.N.4	18	600	4000K	1750
HORIZONTALI.27.900.N.4	27	900	4000K	2800
HORIZONTALI.36.1200.N.4	36	1200	4000K	3400

*According to 4000K light temperature

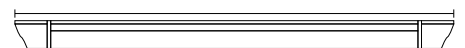
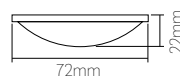
CUSTOMIZE OPTIONS

Dimmable 1-10V	Dimmable PUSH	Dimmable TRIAC	Dimmable DALI	Input Voltage 24V/DC	Light Temperature 3000K	Light Temperature 6500K	Dynamic White	Color Rendering Index > 90	Optional Body Color	Emergency KIT	Pendant or Surface Type
1-10V	PUSH	TRIAC	DALI	24V DC	3K	6.5K	DYN	CRI > 90	B	E	M

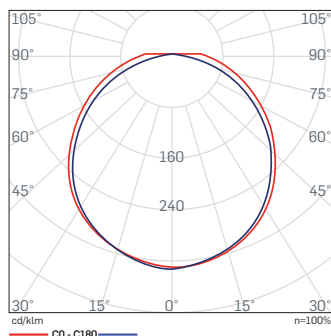
PRODUCT CODING

Product Name	Product Power	Product Size	Control System					Color Temperature			Light Beam
XX	XX	XX	on/off	1-10V	PUSH	TRIAC	DALI	3K	4K	6.5K	
XX	XX	XX	N	V	P	T	D	3	4	6	XX

TECHNICAL DRAWINGS



L: 300mm
L: 600mm
L: 900mm
L: 1200mm



* For different options, please contact our team.