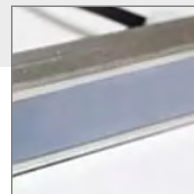
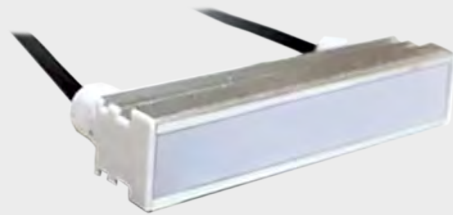


FACIEM

Linear In-Ground



A recessed slim inground. FAcIEM stands for pure light: it produces a light beam which is important when switched on, to disappear from view once it is off.

Those features, with the simple ease of installation, allow FAcIEM to be used as a single light point or in series on the floor. It can highlight even individual architectural elements such as statues to the utmost. The luminaire is 24V. It makes architecture the protagonist and creates suggestive light paths thanks to its excellent lighting performance and high versatility of use.

Luminaire comes with 2 sides cable as standard.

Characteristics

Aluminium Injection Die Cast Body
Electrostatic Powder Paint
Optional RAL Colors
Extra Clear 5mm Tempered Glass
Aluminium PCB
LED with Life Span > 100.000 Hours
CCT tolerance within a 3 step MacAdams ellipse
Corrosion Protection
5 Years Warranty
Marine Coating (Optional)
ENEC Certified Driver
PMMA Diffuser

Key Advantages

- Slim for modern designs.
- Economic and efficient
- Easy installation
- High performance LED
- High corrosion resistance

Applications



Landscape



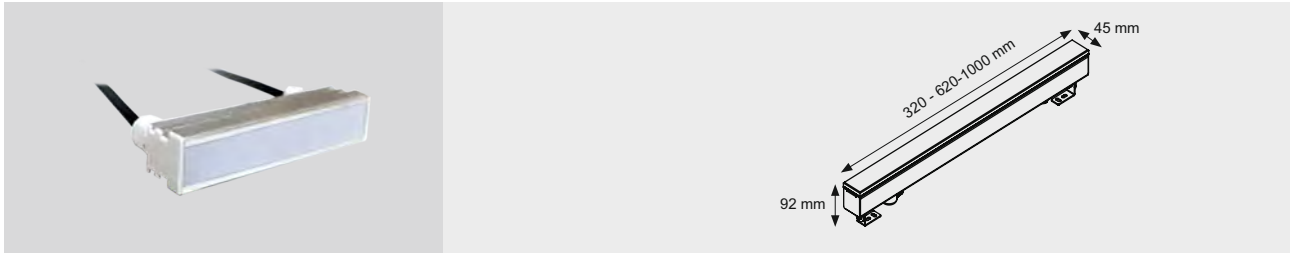
Outdoor



Urban



Architectural



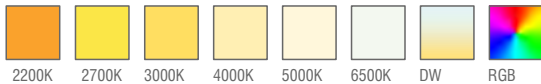
Standard Product

Input	24V / DC
Control	On / Off
Optic	30°
Light Color	4000K
Body Color	7016 Grey
Frame	Stainless Steel
CRI	> 82
Protection	IP67
Impact Resistance	IK10
Protection class IEC	Class I
Power factor (min.)	0,092
Weight	- kg
Ambient Temperature	-30°C / +60°C

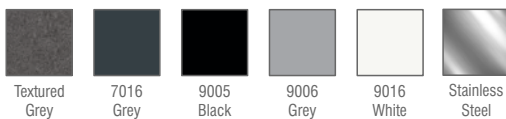
Available Options

Input	24V / DC
Control	RGB, DALI, DIM, DMX
Optic	8°, 15°, 30°, 50°, 60°, 70°, 90°, 120°, Asymmetrical
Light Color	2200K, 2700K, 3000K, 5000K, 6500K
Body Color	Optional RAL colors
Glass	Frosted Diffuser Glass
CRI	> 90
Protection	IP68
Warranty	7-10 Years

Light Colors



Body Colors Options



Beam Angle Options



Optional Accessories



Ordering Details

Product Code	Power	Length	Light Color	Lumen
FACIEM.21.AC.N.4.120.7016	21W	1000mm	4000K	2772

* For different options, please contact our team.

Product Coding

Product Name	Product Power	Input	Control System	Color Temperature	Light Beam	Body Color
XX	XX	AC DC	0-10V PUSH TRAC DALI	3K 4K 6.5K	XX	XX
XX	XX	AC DC	N V P T D	3 4 6	XX	XX