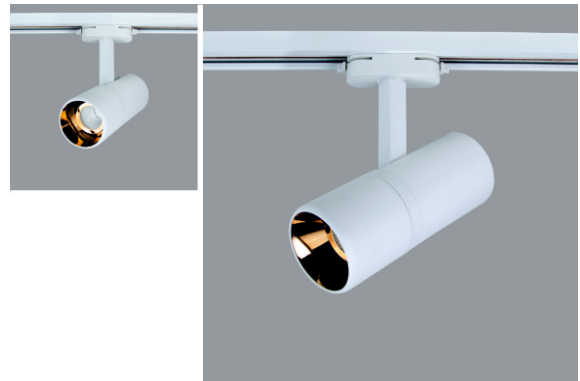


ELECTI COMPO SLIM

track type
spotlight



Aluminum injection body
High efficiency reflector
Constant current LED driver
Electrostatic powder coating paint
Optional body colors
ENEC Standards
Made in TURKEY



PRODUCT CODE	W	Height	Lenght	Temp	Lumen*
ELECOMSL.7.70.N.4.19	7	170	Ø70	4000K	770
ELECOMSL.7.70.N.4.40	7	170	Ø70	4000K	750
ELECOMSL.10.70.N.4.19	10	170	Ø70	4000K	1070
ELECOMSL.10.70.N.4.40	10	170	Ø70	4000K	1050
ELECOMSL.13.70.N.4.19	13	170	Ø70	4000K	1260
ELECOMSL.13.70.N.4.40	13	170	Ø70	4000K	1241

* According to 4000K light temperature

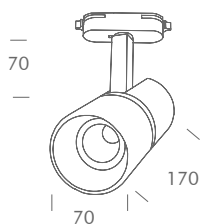
REFLECTOR OPTIONS



PRODUCT CODING

Product Name	Product Power	Product Size	Control System				Color Temperature			Light Beam	
XX XX XX	XX	XX	on/off	1-10V	PUSH	TRIAC	DALI	3K	4K	6.5K	XX

TECHNICAL DRAWINGS

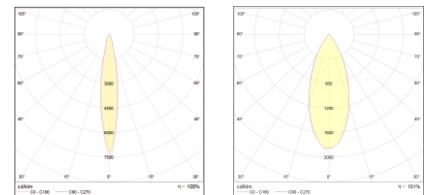


BASIC OPTIONS

on/off	on/off Control (No Dimmable)
230V AC	Input Voltage 230V/AC
CRI >80	Color Rendering Index >80
4K	Light Temperature 4000K
▲	Light Beam 19°, 40°
w	White Body Color

CUSTOMIZE OPTIONS

Dimmable 1-10V	Dimmable PUSH	Dimmable TRIAC	Dimmable DALI	Input Voltage 24V/DC	Light Temperature 3000K	Light Temperature 6500K	Dynamic White	Color Rendering Index >90	Black Body Color	EMERGENCY KIT
1-10V	PUSH	TRIAC	DALI	24V DC	3K	6.5K	DYN	CRI >90	B	G



* For different options, please contact our team.