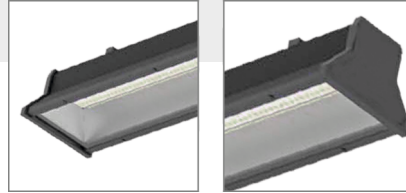
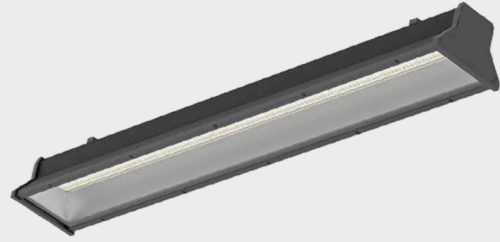


ALTIS

LED surfaced type
High Performance Industrial Lighting



ALTIS Linear serie is intended for new hazardous area installations as well as retrofitting existing fluorescent systems that require high-performance. ALTIS is a harmonic combination of strong and attractive and attractive form.

Housing of UV stabilized, made of Aluminium Extrusion body. Two clamps for surface mounting of the luminaire. Natural silicone gel gasket. ALTIS can be installed in enviroments with high temperature. If the light fittings are installed in exterior, the degree of IP protection is IP65.

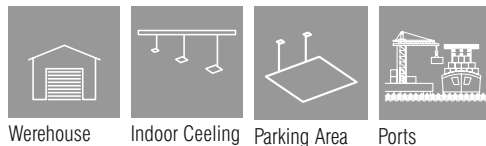
Characteristics

Aluminium Extrusion body
Aluminium End caps
Tempered Glass
Constant Current output LED driver
With high efficiency aluminium PCB
UV Protected PMMA Diffuser & Body
LED with Life Span > 100.000 Hours
CCT tolerance within a 3 step MacAdams ellipse
Corrosion Protection for diffuser & body (Optional)
5 Years Warranty
Marine Coating (Optional)

Key Advantages

- High Efficiency
- Safe Instalation and application
- Cost-Efficient
- Various installation type
- Easy installation
- High performance LED
- High corrosion resistance

Applications



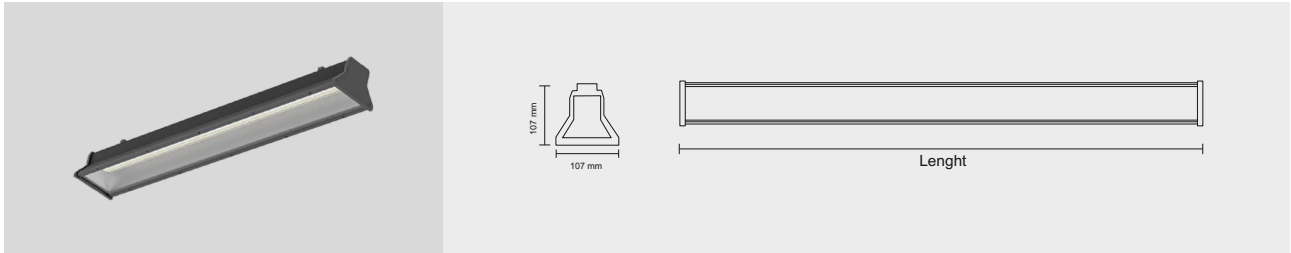
Warehouse

Indoor Ceiling

Parking Area

Ports

ALTIS



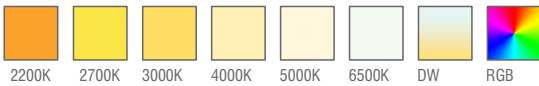
Standard Product

Input	210-260V / AC 50-65Hz
Control	On / Off
Optic	120°
Light Color	4000K
Body Color	9005 Black
CRI	>82
Protection	IP65
Impact Resistance	IK08
Protection class IEC	Class I
Power factor (min.)	0,092
Wind Catching Area	0,26m ²
Weight	4,2 kg
Ambient Temperature	-25°C / +60°C

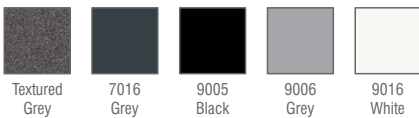
Available Options

Input	24V / DC
Control	DALI, DIM, DMX
Light Color	2200, 2700, 3000K, 5000K, 6500K
Body Color	Optional RAL colors
Surge protection (common/differential)	4KV/6KV
CRI	>90
Warranty	7-10 Years

Light Colors



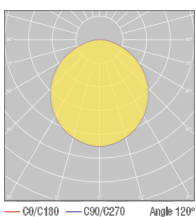
Body Colors Options



Optional Accessories



Beam Angle Options



Ordering Details

Product Code	Power	Light Color	Dimensions	Lumen
ALTIS.50.600.AC.N.4.120.9005	50W	4000K	600	5600
ALTIS.65.600.AC.N.4.120.9005	65W	4000K	600	8400
ALTIS.75.900.AC.N.4.120.9005	75W	4000K	900	10500
ALTIS.110.1200.AC.N.4.120.9005	110W	4000K	1200	15400
ALTIS.150.1200.AC.N.4.120.9005	150W	4000K	1200	21000

* For different options, please contact our team.

Product Coding

Product Name	Product Power	Input	Control System	Color Temperature	Light Beam	Body Color							
XX	XX	AC	DC	50/65/75/110/150W	PUSH	TRAC	DALI	3K	4K	6.5K	XX	XX	
XX	XX	AC	DC	N	V	P	T	D	3	4	6	XX	XX